



45 FX



**MIXING UNIT:** Drum capacity 6,100 liters. Concrete output: 4.5 M<sup>3</sup> per batch (Concrete output @80-85% rated capacity). Mixing and discharging speed independent from r.p.m. of diesel engine. Discharging by reversing drum. Double mixing screw, cover for emergency unloading.



**ENGINE:** Kirloskar Oil Ltd. Model: 4R 1040 TC, BS III, Water Cooled four Stroke turbo charge diesel engine Ratings : 110 HP@2500 rpm



**TRANSMISSION:** Hydrostatic Bosch-Rexroth. Heavy duty differential axles with planetary reducers. 4-wheel driving and steering.



**SPEED:** Working speed from 0 to 10 kms/h, road transfer from 0 to 25 kms/h. Electric servo control.



**DRIVING SEAT:** ROPS-FOPS canopy. Reversible seat with automatic inversion of hydraulic steering circuit.



**CHASSIS:** Steel profile specially engineered for off-road operations.



**HYDRAULIC SYSTEM:** Three independent circuits. Two variable outlet pumps for hydrostatic transmission and drum rotation. One pump for services. Inlet and outlet filter. Heat exchanger water/oil-air type.



**LOADING SHOVEL:** Capacity 600 liters, complete with hydraulic opening gate.



**CHUTE:** Slewing and hydraulically tilting. Fitted with two pins easily detachable to increase the discharge height



**WATER SYSTEM:** Self contained. Hydraulic driven water pump. Water meter. Washing outlet.



**GRADIENT:** Fully loaded 30% 16-17 degree



**BRAKES:** Oil bath disc brakes inside differential axles. Twin independent circuits. Negative hydraulic parking brake.



**TYRES:** Off-Road type 16/70-20 PR 14.



**STEERING:** Hydrostatic. 3 way steering. Radius: internal 2550 mm, external 7825 mm.



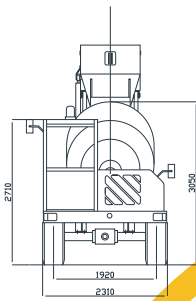
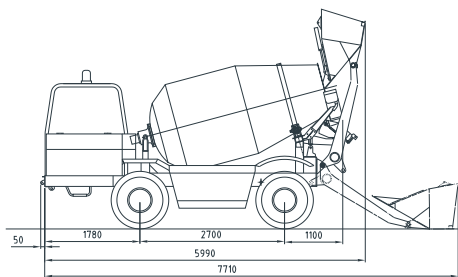
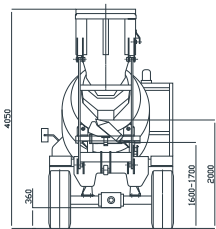
**ELECTRIC SYSTEM:** 12 Volt. 120 Ah battery for electric start and road lighting. Safety battery cutoff.



**TANKS:** Water: 2 x 580 liters. Diesel: 115 liters. Hydraulic oil: 80 liters.



**WEIGHT:** About Kgs 6,800, equally distributed on both axles.



**Apollo Carmix Equipments Private Limited**  
[an Apollo Infratech Group company]  
Ahmedabad-Mehsana State Highway,  
Village: Rajpur - 382 715, Taluka: Kadi, Dist: Mehsana,  
Gujarat, INDIA. Tel: +91 90990 71618, 90991 44644  
E-mail: info@apollocarmix.com|www.apollocarmix.com

ifma1996@gmail.com



Easy and economic  
Concrete anywhere



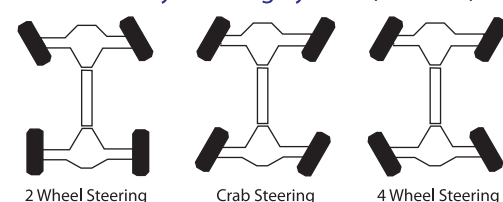
● Apollo Carmix Self-Loading Mixer 45 FX





Apollo Infratech Private Limited - one of India's fastest growing concrete solutions provider has now formed a joint venture company Apollo Carmix Equipments Private Limited with Metalgalante (Italy) that invented and developed Carmix. Thanks to its over 4 decades of experience, Carmix represents world-wide the ideal solution to produce high-quality cost-effective concrete wherever and whenever needed. Carmix works efficiently in over 150 countries and now we proudly say that the same equipments are manufactured & distributed in India.

Three Way Steering System (4 x 4 x 4)



[www.apollocarmix.com](http://www.apollocarmix.com)

## World best self-loading mixers

### Apollo Carmix Self-Loading Mixer 45 FX

#### SALIENT FEATURES

- Drum Capacity: 4.5 cum/batch
- Concrete Output: @80-85% of rated capacity
- Ideal solution, whenever & wherever small quantity of concrete is required
- Operation is user-friendly
- Compact & economic
- Low Maintenance Cost
- 4 Wheel drive & 4 Wheel steer
- Electronic weighing system with printer
- Efficient and reliable after-sale service



#### WHY TO CHOOSE APOLLO CARMIX 45FX SELF LOADING MIXER

- Due to bigger size of the drum capacity more production is possible in lesser time. Therefore massive mixing can be possible in a single batch.
- The bigger size of the shovel allows to load bulk quantity of raw material at a time. Hence, reduces cycle time.
- The hydraulic shutter gate prevents material spillage from back side of the shovel while loading and correct measured material will go inside the drum to make quality concrete.
- Bigger capacity water tank allows to store huge volume of water to produce multiple batches without refilling and for machine cleaning purpose.
- Bigger capacity of diesel tank allows your machine to run/operate full day without wasting your time for refilling.
- Onboard electronic weighing system gives the facility to produce quality concrete as per your mix design.
- Due to less turning radius our machine can move or turn in a shorter/small place.
- ROPS & FOPS CANOPY is to prevent cabin deformation in the event of a rollover situation or accident.
- More machine weight gives more stability.
- Faster road speed ensures faster reach.
- Better ground clearance allows these vehicles to travel smoothly on rough/ off roads with a reduced possibility of the vehicle sticking or the undercarriage being damaged by rough surfaces.
- Swivelable driver post with 180° for complete visibility during driving as well as complete visibility for loading side during weighing & batching, mixing and discharge operations.
- Hydraulically operated discharging chute.
- Oil -Bath Built -in Disc Breaks : No maintenance at all and total reliability.

Apollo Carmix Equipments Private Limited

